



MONTHLY MEMBERSHIP PROGRESS REPORT

District 38 N

Results as of: 6/30/2017

GMT: OPEN

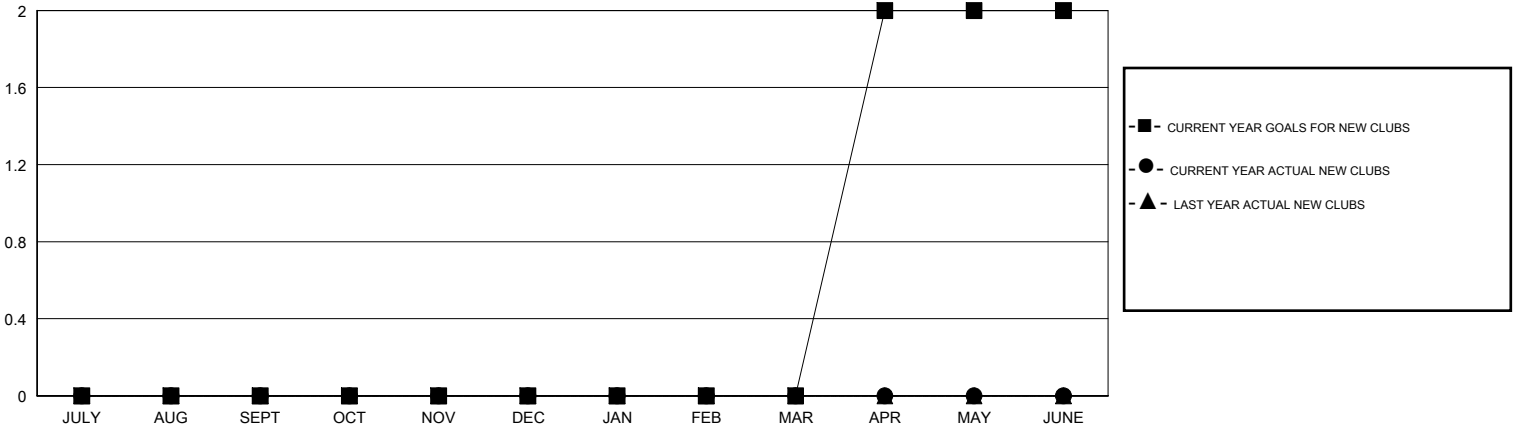
LOCATION NEBRASKA

GMT CA

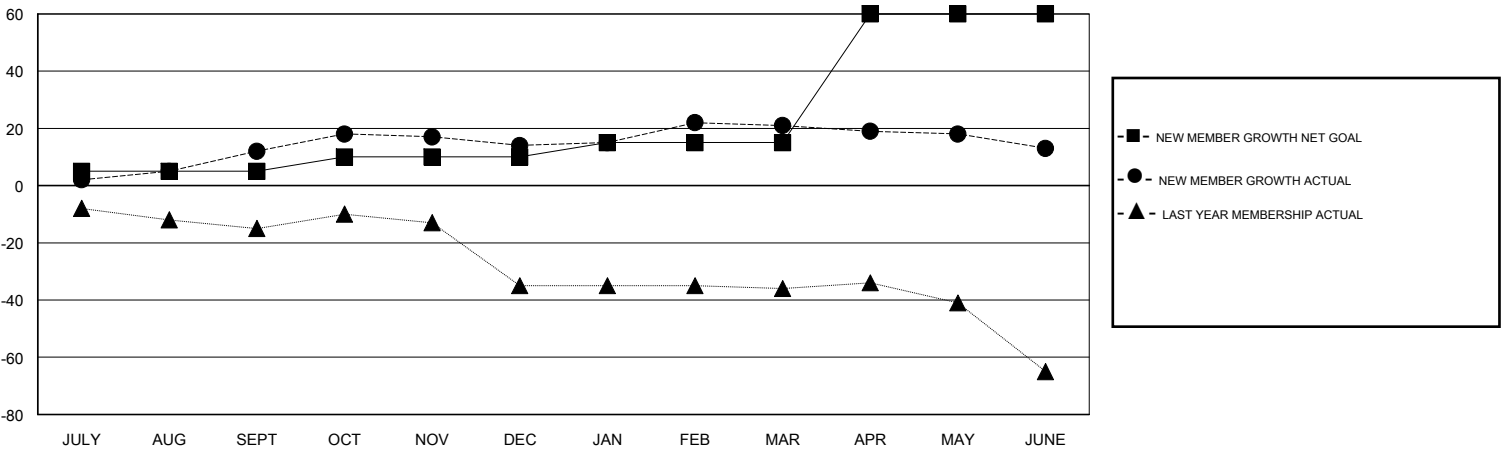
Clubs			
RESULTS FOR 2016-2017			
QUARTER	NEW CLUB GOAL	NEW CLUBS	DROPPED CLUBS
JULY/AUG/SEPT	0	0	0
OCT/NOV/DEC	0	0	0
JAN/FEB/MAR	0	0	0
APR/MAY/JUNE	2	0	0

Members			
RESULTS FOR 2016-2017			
QUARTER	NEW MEMBER GROWTH NET GOAL (not reinstated or transfers)	NEW MEMBER GROWTH ACTUAL (not reinstated or transfers)	DROPPED MEMBERS ACTUAL (including transfers)
JULY/AUG/SEPT	5	17	5
OCT/NOV/DEC	5	16	14
JAN/FEB/MAR	5	13	6
APR/MAY/JUNE	45	13	21

GOALS AND ACTUAL NEW CLUBS CUMULATIVE



GOALS AND ACTUAL MEMBERS CUMULATIVE



DROPPED CLUBS: 0	16 CLUBS OF 32 ADDED 1 OR MORE NEW MEMBERS	<u>GENDER DISTRIBUTION</u>
		MALE 593 (73.30%)
		FEMALE 216 (26.70%)
<u>DROPPED MEMBERS</u>	CLICK HERE FOR CUMULATIVE MEMBERSHIP DATA	TOTAL FAMILY UNIT MEMBERS 155
DECEASED 4		FAMILY MEMBERS PAYING HALF DUES 79
CLUB CANCELLED 0		
OTHER 42		
TOTAL 46		